

Welcome!!!
Just hang On :o)
Our meeting will start soon.



Intro to SCLEROLOGY

MarysHerbs.com

Disclaimer

This webinar is not to be used instead of going to a competent doctor. I do not directly nor indirectly dispense medical advice nor prescribe in any way alternative treatment.

In the event you use this information, which is only of historical value, you are prescribing for yourself which is still your constitutional right. I assume no responsibility.

I am independent in my attempt to educate the public. Although I do endorse some top quality products. I receive no financial support from any health or herb company for producing and sharing this information.

I also believe it is a crime that we have to pussy foot around the truth because there is a law that says that I cannot declare what changing your lifestyle and diet can do for your health, but I love this great country and will do my best to try to obey their law, even if I strongly disagree with them...

Natural health works slowly. I suggest that you do not stop medication without guidance of a doctor. I say this not only because it is the law, but because I BELIEVE STOPPING MEDICATION WITHOUT THE GUIDANCE OF A DOCTOR IS UNWISE AND DANGEROUS.

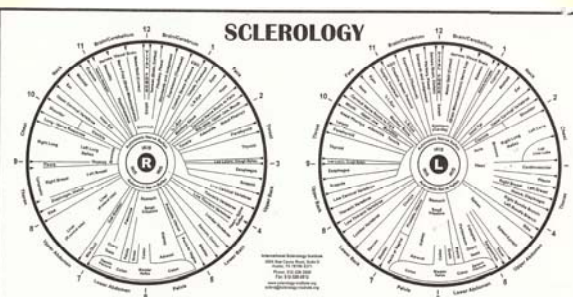
If you would like to make healthier changes in my diet and my doctor was not willing to help you while you work with a natural health practitioner, I suggest you find a doctor who values and respects his patient's rights and fire the doctor who would not!



MarysHerbs.com

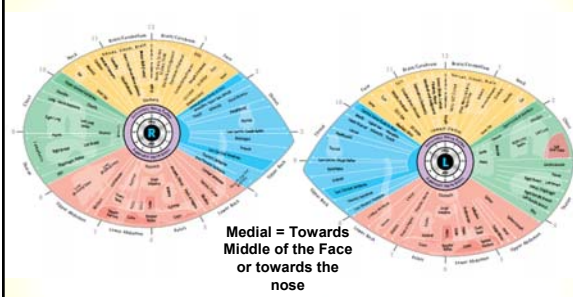
More Complex

SCLEROLOGY



MarysHerbs.com

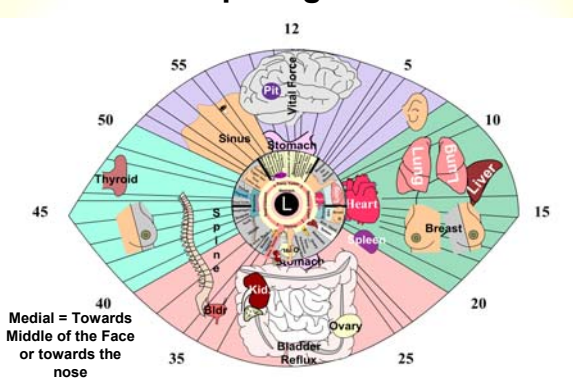
More Complex



Medial = Towards Middle of the Face or towards the nose

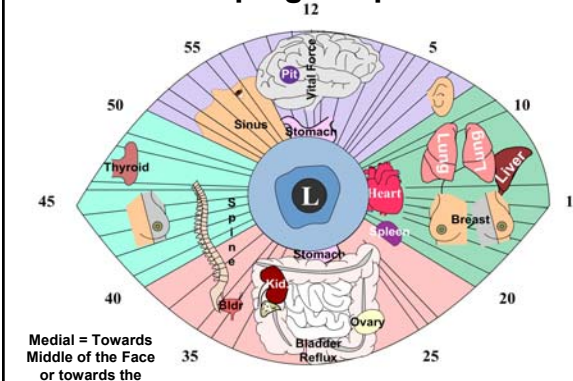
MarysHerbs.com

Comparing Charts

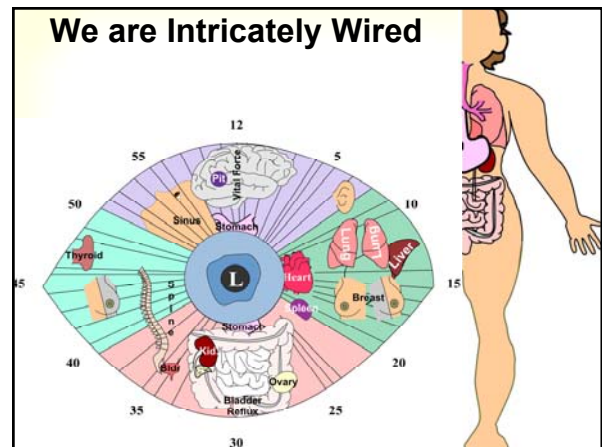
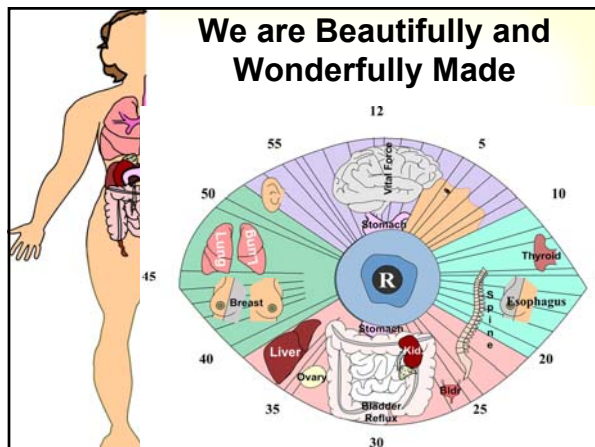
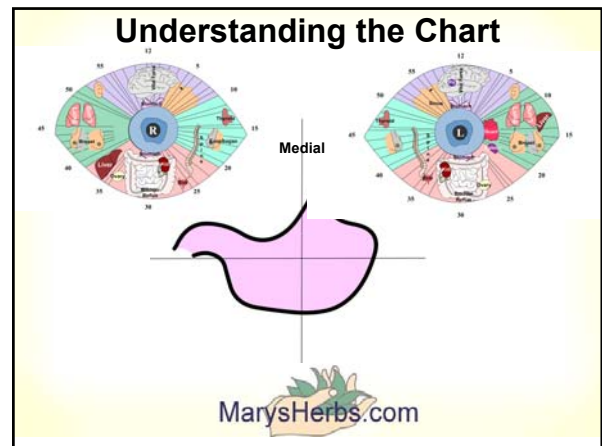
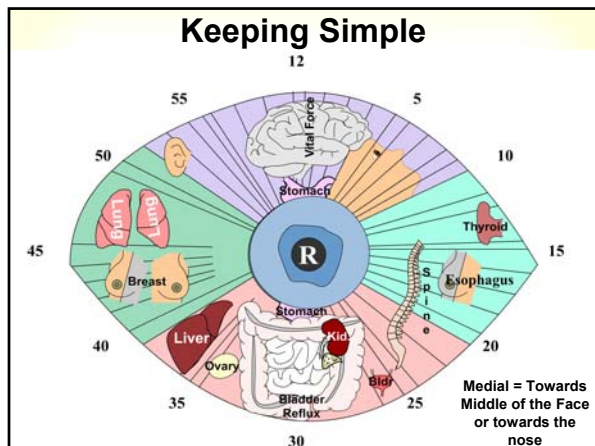


Medial = Towards Middle of the Face or towards the nose

Keeping Simple



Medial = Towards Middle of the Face or towards the nose



Iridology Vs Sclerology

The Iris tells Genetics and the health History of the body. The Sclera is more fluid and changes quickly, indicating more what is going on presently.

Hence, they complement each other nicely.



Little and Faint Lines Only Should be seen in the Sclera



There are 4 basic signs in the Sclera

1. Discoloration
2. Deposits
3. Traveling Lines
4. Lines Pointing toward Iris (of various configurations)
 - a. Position
 - b. Proximity
 - c. Prominence
 - d. Shape



There are 4 basic signs in the Sclera

1. Discoloration

2. Deposits
3. Traveling Lines
4. Lines Pointing toward Iris (of various configurations)
 - a. Position
 - b. Proximity
 - c. Prominence
 - d. Shape

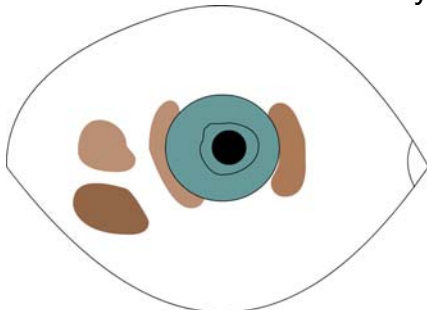


Discoloration

- Brown – toxic liver – melanin deposits – Chronic infection – **WORK WITH LIVER**
- Yellow – jaundice – bilirubin – **WORK WITH LIVER**
- Gray – not enough oxygen – Tissue Changes
- Red Wash – heart ~ outer = physical; inner = emotional
- Pink -- Alkalosis – Work with pH
- Blue – Normal in babies under 3 months, Older; lacking oxygen, iron deficiency and Venus congestion – Work with circulation and blood



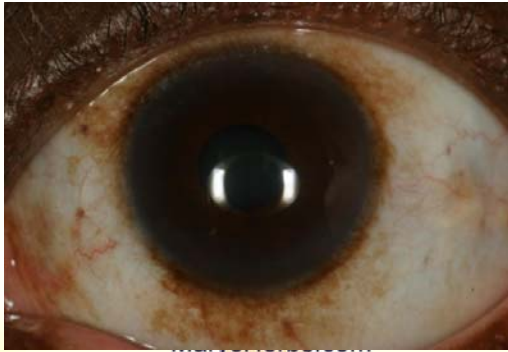
Liver ~ Brown Coloration
Even more serious in a blue eye



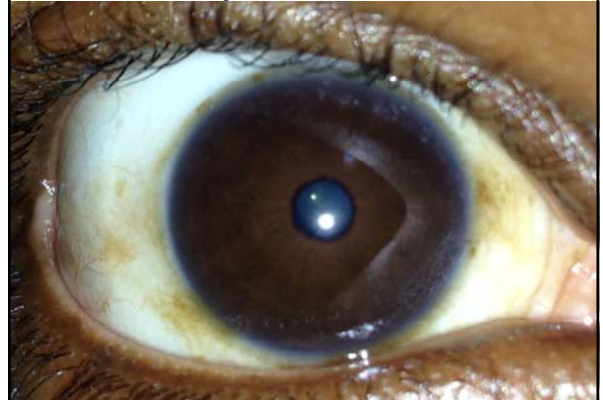
Brown Deposits ~ Liver Toxins



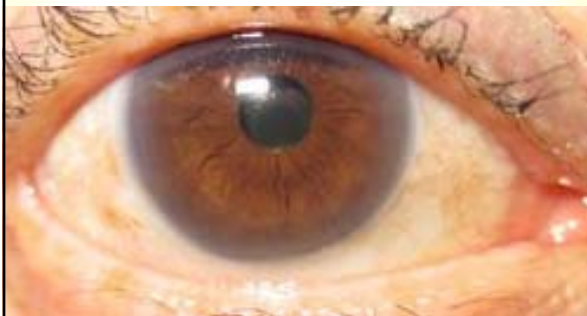
Brown Deposits ~ Liver Toxins



Brown Deposits ~ Liver Toxins



Melanin ~ Liver



MarysHerbs.com

Melanin ~ Liver



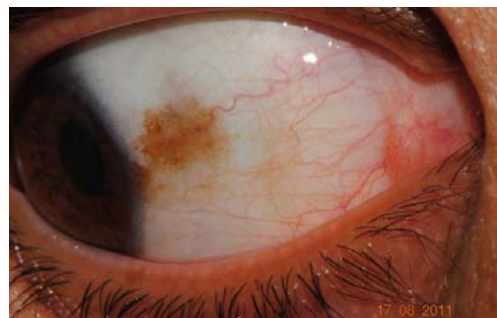
MarysHerbs.com

**Melanin ~ Liver hardening with
bacteria involvement**

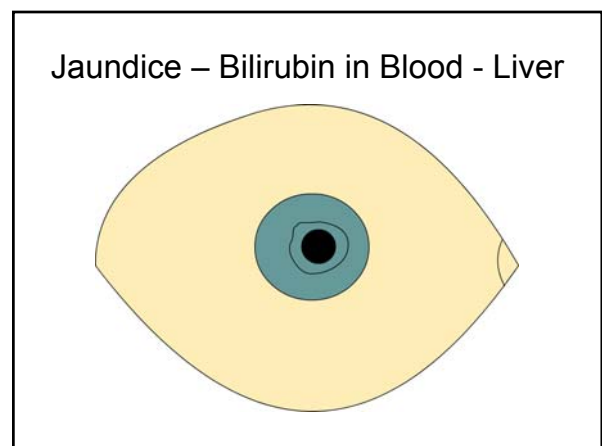
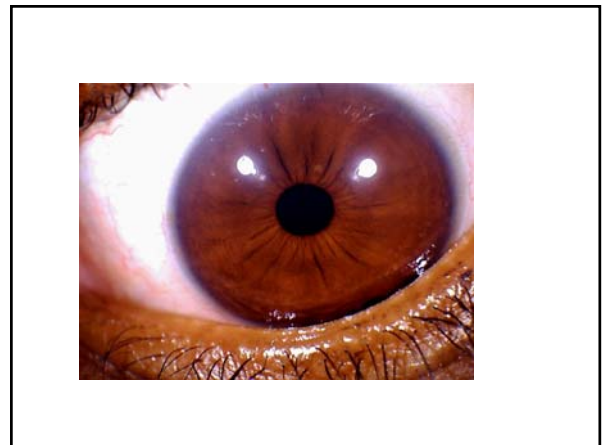
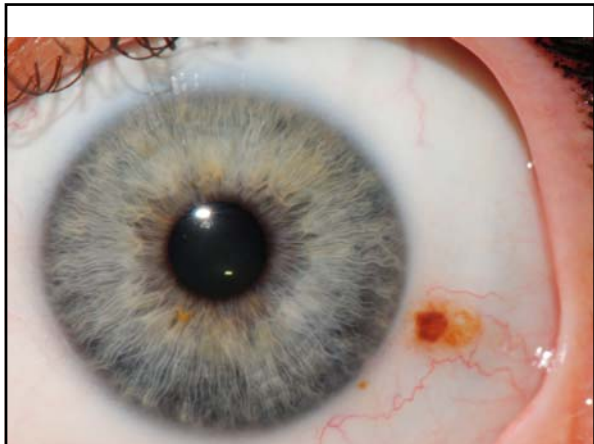


MarysHerbs.com

Melanin Liver



MarysHerbs.com

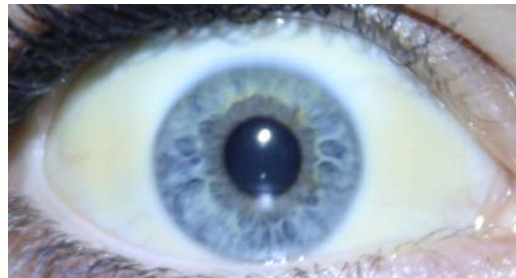


Yellow Deposits ~ Liver ~ Jaundice



MarysHerbs.com

Yellow Deposits ~ Liver ~ Jaundice



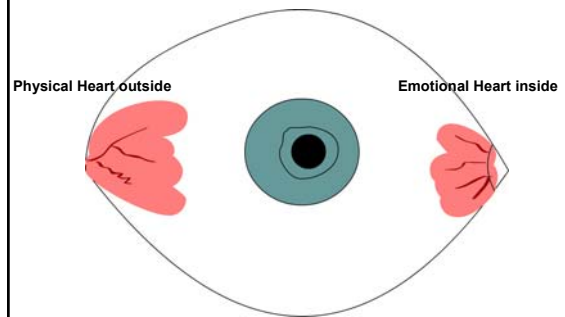
MarysHerbs.com

Liver Coloration



MarysHerbs.com

Redwash - Heart

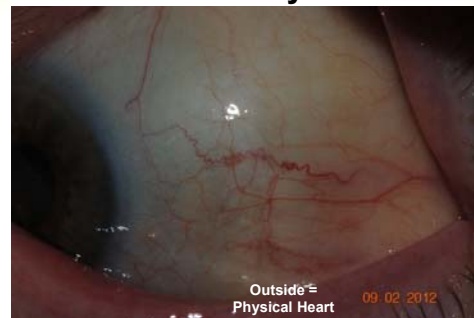


Red wash physical heart always in outside sclera



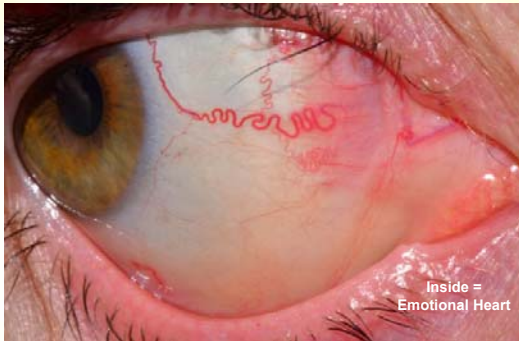
MarysHerbs.com

Red wash heart with yellow coloring



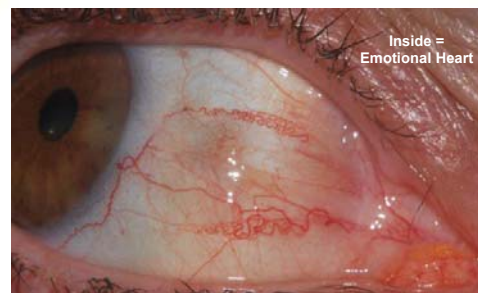
MarysHerbs.com

Red Wash ~ Medial ~ Emotional Heart



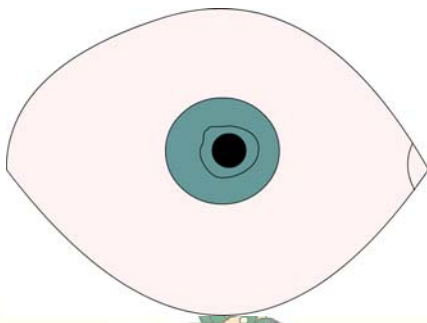
MarysHerbs.com

Red Wash ~ Medial ~ Emotional Heart



MarysHerbs.com

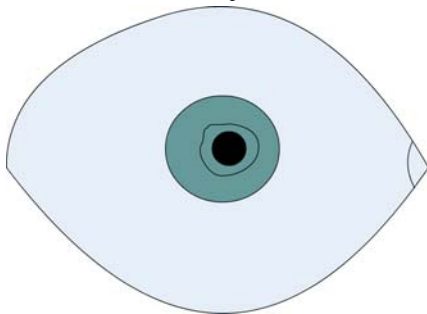
Pinkish Discoloration ~ Alkalosis



MarysHerbs.com



Bluish Tint ~ Baby or Lack of O2



Bluish Discoloration ~ Babies



MarysHerbs.com

There are 4 basic signs in the Sclera

1. Discoloration

2. Deposits

3. Traveling Lines

4. Lines Pointing toward Iris (of various configurations)

- Position
- Proximity
- Prominence
- Shape

MarysHerbs.com

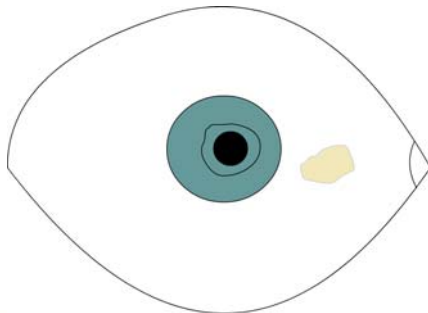
Deposits

Pinguecula \piŋ- 'gwek-yə-lə\ – Fatty deposit in the sclera indicating poor digestion of fats.... Usually due to liver and/or gallbladder.

Pterygium \te- 'rij-ē-əm\ – A benign tissue growth of the conjunctiva which sometimes spreads over the Iris. (Look if fed by blood vessels) ... An irritant...possibly pH

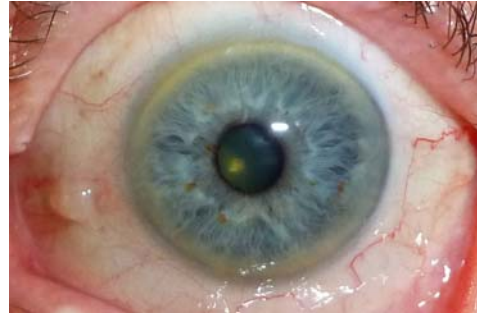
MarysHerbs.com

Pinguecula – poor digestion of fats



MarysHerbs.com

Pinguecula – Poor digestion of fats



MarysHerbs.com

Pinguecula – Poor digestion of fats



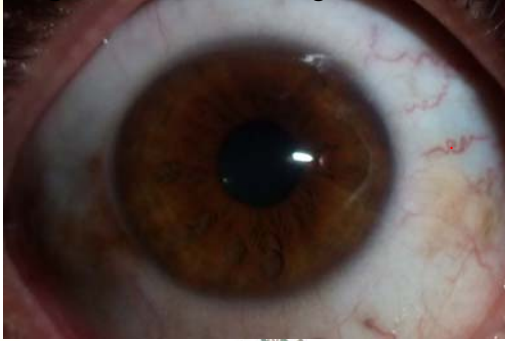
MarysHerbs.com

Pinguecula – Poor digestion of fats



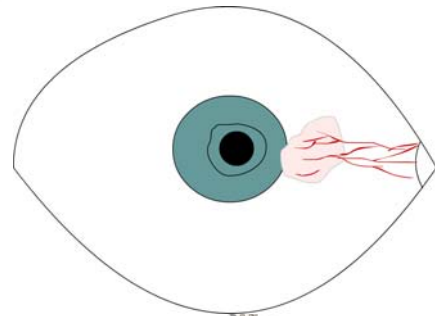
MarysHerbs.com

Pinguecula – Poor digestion of fats



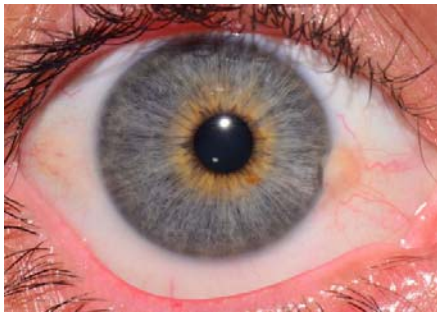
MarysHerbs.com

Pterygium



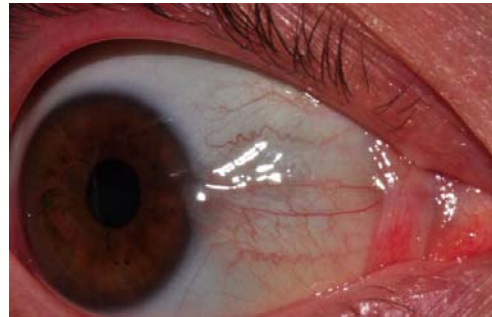
MarysHerbs.com

Pterygium



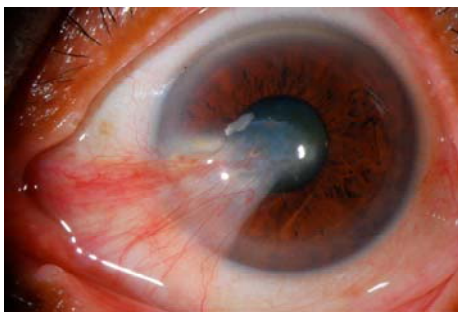
MarysHerbs.com

Pterigium



MarysHerbs.com

Pterygium



MarysHerbs.com

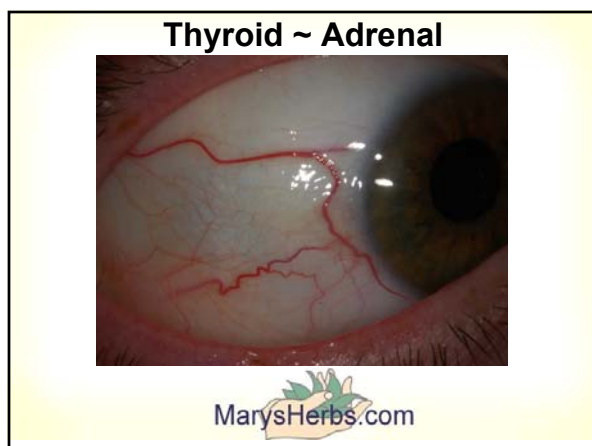
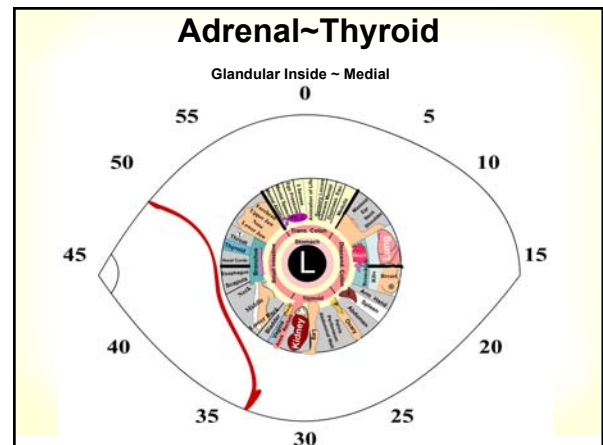
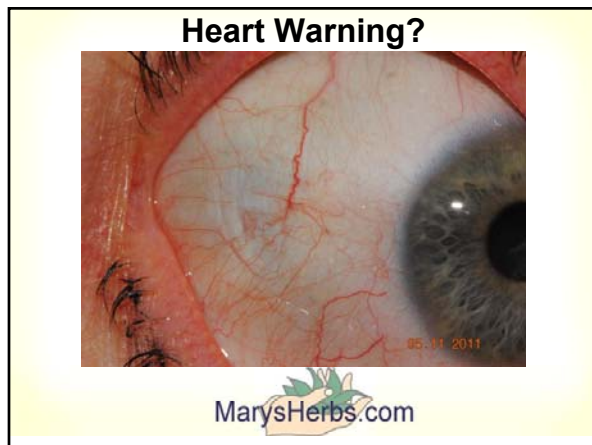
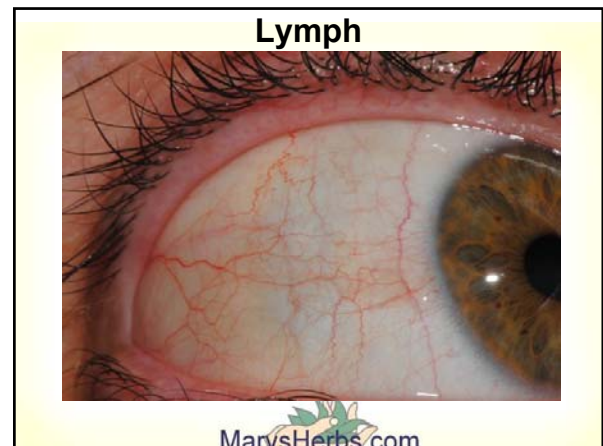
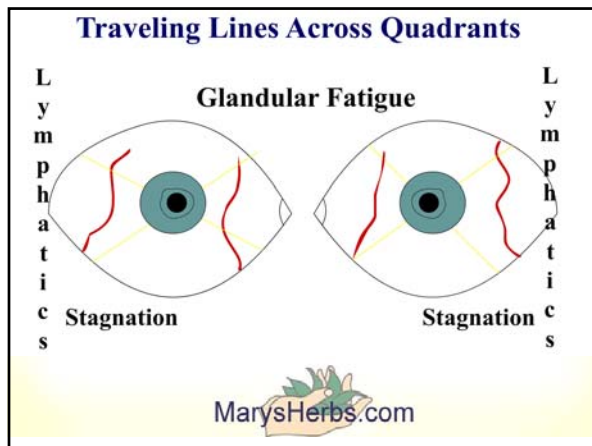
There are 4 basic signs in the Sclera

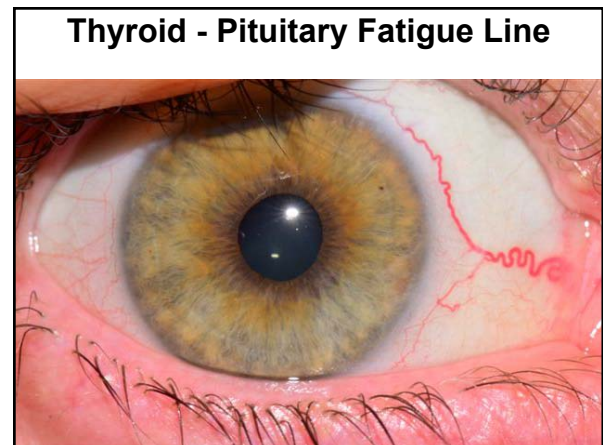
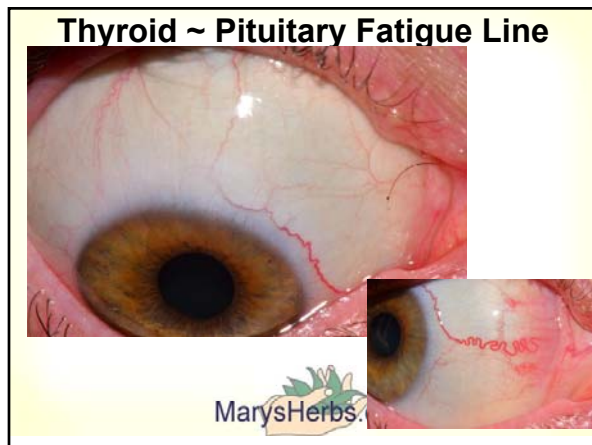
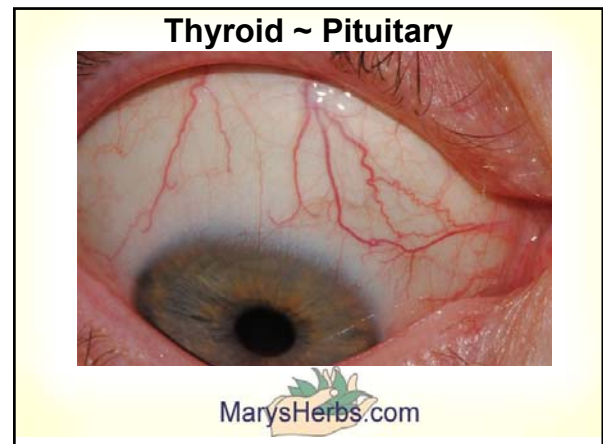
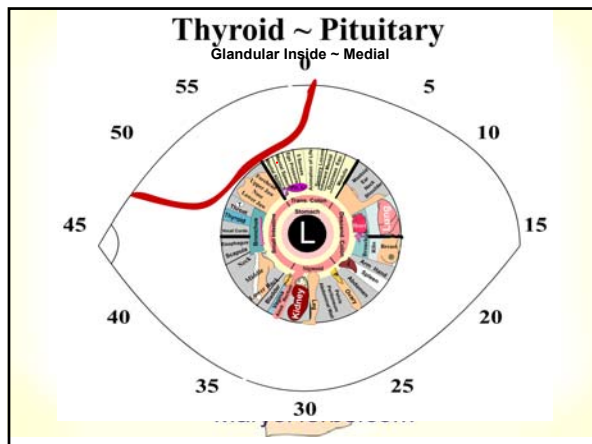
1. Discoloration
2. Deposits

3. Traveling Lines

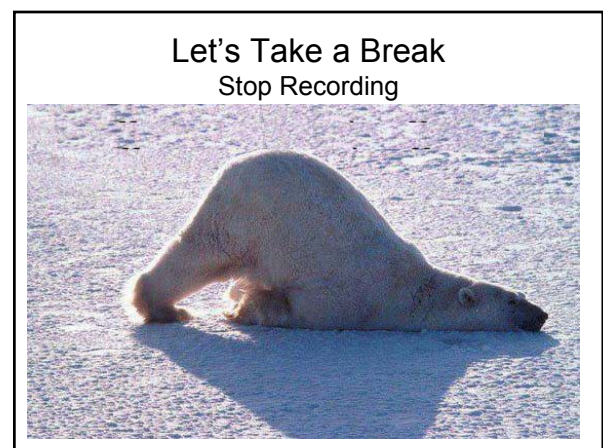
4. Lines Pointing toward Iris (of various configurations)
 - a. Position
 - b. Proximity
 - c. Prominence
 - d. Shape

MarysHerbs.com

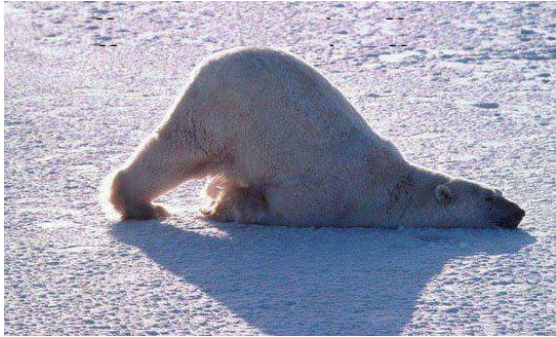




- There are 4 basic signs in the Sclera**
1. Discoloration
 2. Deposits
 3. Traveling Lines
 - 4. Lines Pointing toward Iris**
(of various configurations)
 - a. Position
 - b. Proximity
 - c. Prominence
 - d. Shape
- MarysHerbs.com



Let's Take a Break
Start Recording



There are 4 basic signs in the Sclera

1. Discoloration
2. Deposits
3. Traveling Lines

4. Lines Pointing toward Iris (of various configurations)

- a. Position
- b. Proximity
- c. Prominence
- d. Shape

MarysHerbs.com

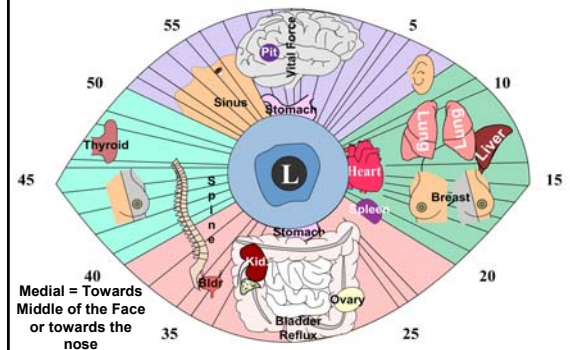
4. Lines Pointing toward Iris (of various configurations)

Shows in either eye and positions

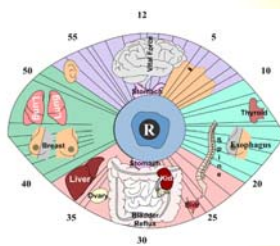
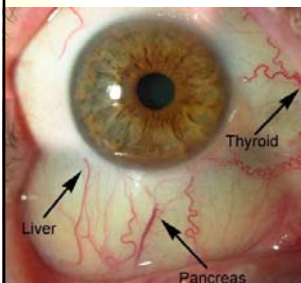
- a. Position
- b. Proximity
- c. Prominence
- d. Shape

MarysHerbs.com

Determine where the Line is basically heading

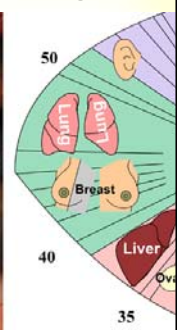


Where are the lines heading?

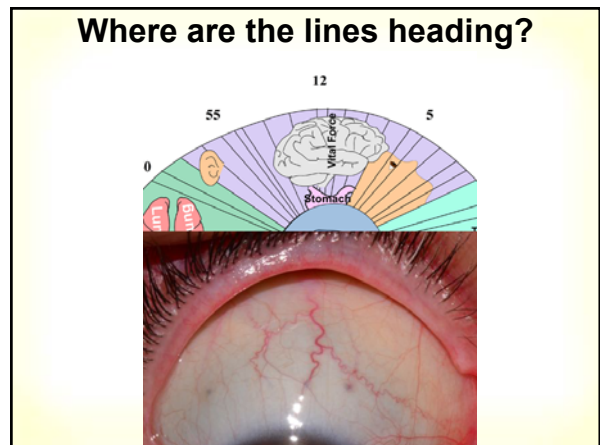
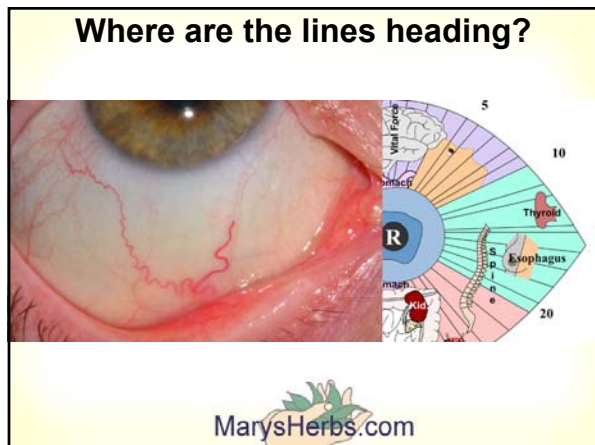
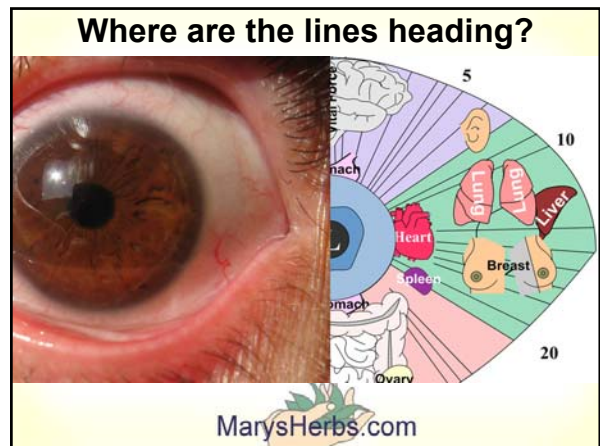
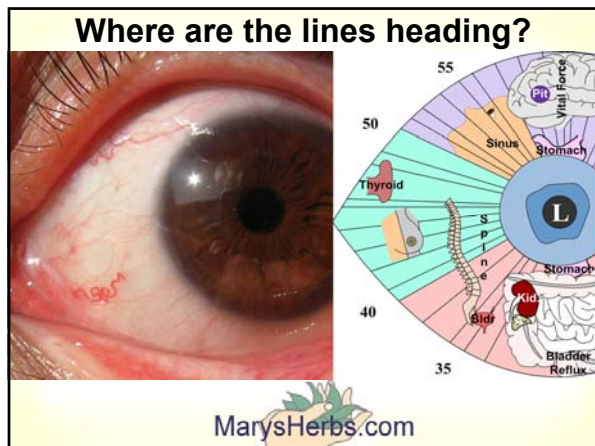


MarysHerbs.com

Where are the lines heading?



MarysHerbs.com



4. Lines Pointing toward Iris
(of various configurations)

Shows in either eye and positions

- Position
- Proximity**
- Prominence
- Shape

MarysHerbs.com



The Closer to the Iris ~ The More Serious the Problem



MarysHerbs.com

The Closer to the Iris ~ The More Serious the Problem



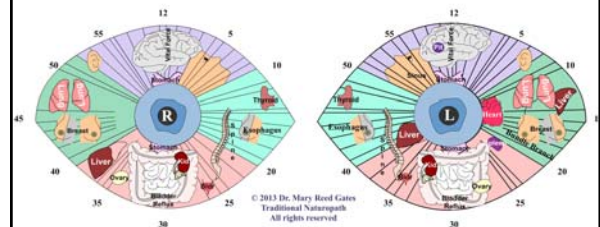
MarysHerbs.com

The Closer to the Iris ~ The More Serious the Problem



MarysHerbs.com

Sclerology Chart for Beginners



MarysHerbs.com

4. Lines Pointing toward Iris (of various configurations)

Shows in either eye and positions

- a. Position
- b. Proximity
- c. Prominence**
- d. Shape

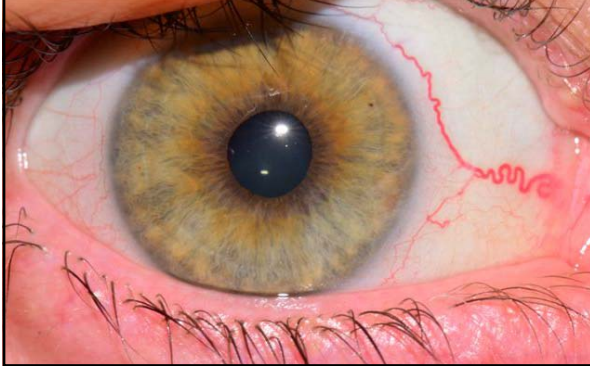
MarysHerbs.com

The Thicker and More Prominent the Line the More Profound the Condition



MarysHerbs.com

The Thicker and More Prominent the Line the More Profound the Condition



The Thicker and More Prominent the Line the More Profound the Condition



The Thicker and More Prominent the Line the More Profound the Condition



MarysHerbs.com

4. Lines Pointing toward Iris (of various configurations)

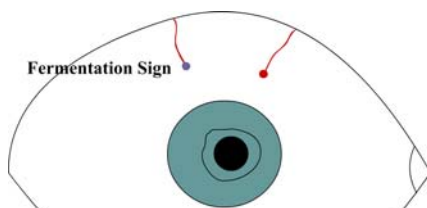
- a. Position
 - b. Proximity
 - c. Prominence
- Shows in either eye and positions

d. Shape

- Fermentation
- Infection Pocket
- Toxic Lines
- Allergy Net
- Abnormal Tissue
- Blood Pressure Loop
- Encapsulation
- Healing Hook
- Healing Lines
- Saw tooth

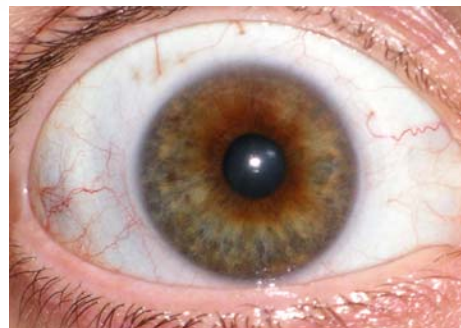
MarysHerbs.com

Fermenting ~ Possibly Yeast Overgrowth



MarysHerbs.com

Fermentation



MarysHerbs.com

Fermentation



MarysHerbs.com

Fermentation



MarysHerbs.com

Fermentation



MarysHerbs.com

Fermenting Sign



MarysHerbs.com

Fermenting Sign



MarysHerbs.com

Fermenting Sign



4. Lines Pointing toward Iris

(of various configurations)

- a. Position
- b. Proximity
- c. Prominence

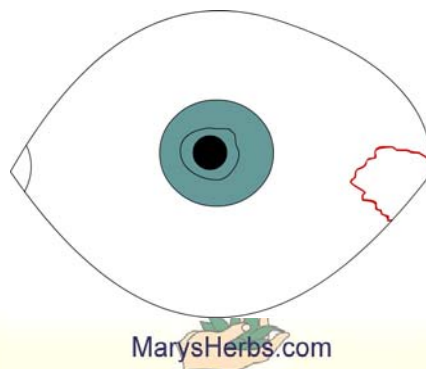
Shows in either eye and positions

d. Shape

- Fermentation
- **Infection Pocket**
- Toxic Lines
- Allergy Net
- Abnormal Tissue
- Blood Pressure Loop
- Encapsulation
- Healing Hook
- Healing Lines
- Saw tooth

MarysHerbs.com

Infection Pocket



Infection Pocket



Infection Pockets

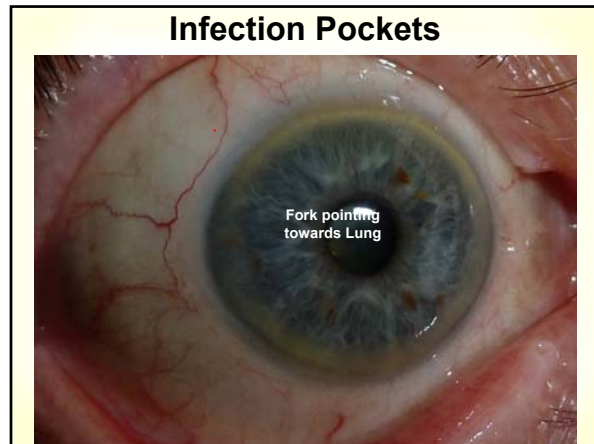


Infection Pocket



Infection Pocket





4. Lines Pointing toward Iris

(of various configurations)

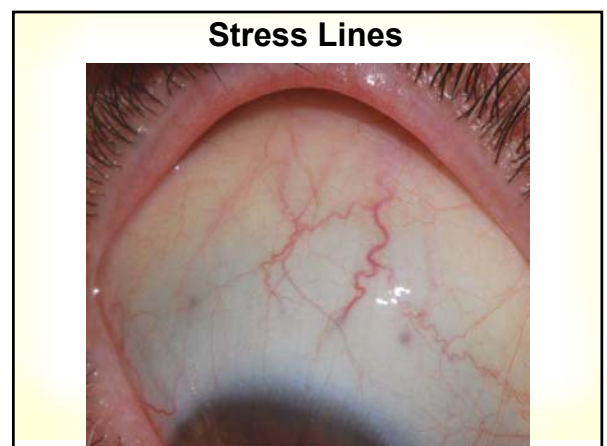
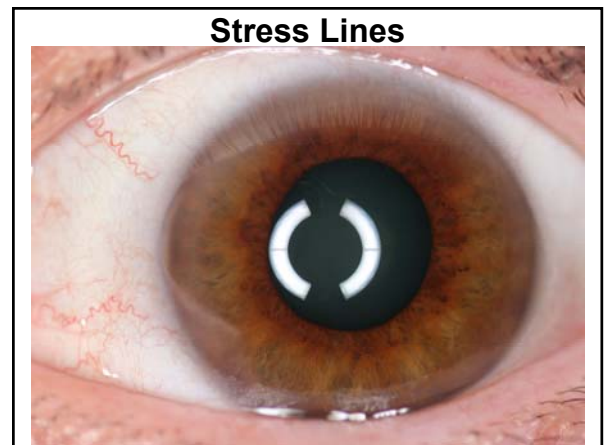
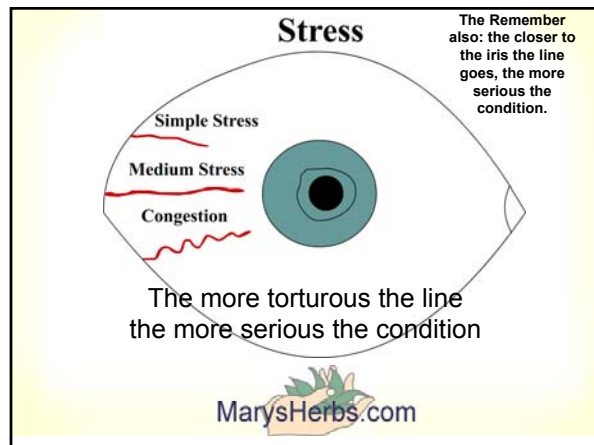
a. Position
b. Proximity
c. Prominence

Shows in either eye and positions

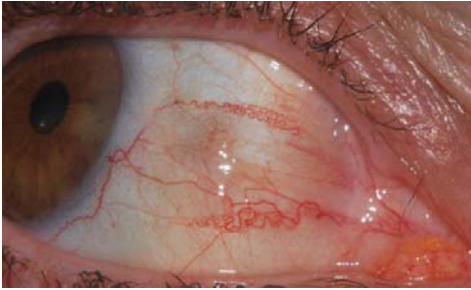
d. Shape

- Fermentation
- Encapsulation
- Infection Pocket
- Healing Hook
- **Toxic Lines**
- Healing Lines
- Allergy Net
- Sawtooth
- Abnormal Tissue
- Blood Pressure Loop

MarysHerbs.com

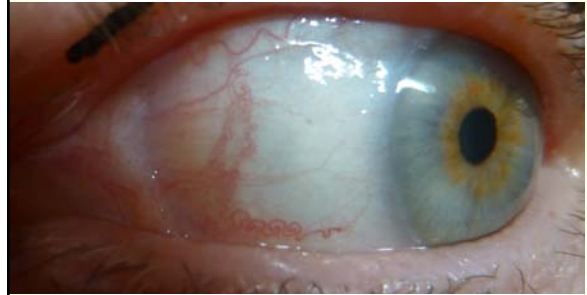


Stress Lines



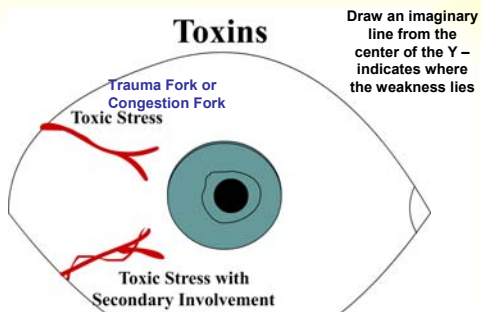
MarysHerbs.com

Drug Pattern ~ Looks like a wave



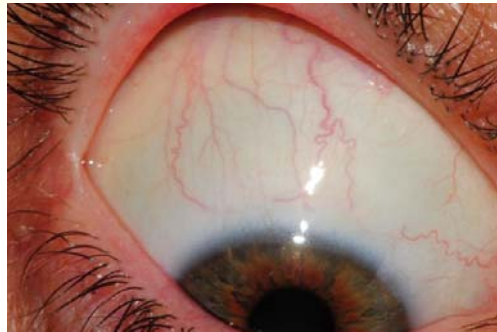
MarysHerbs.com

Toxins



MarysHerbs.com

Trauma Fork to Pituitary



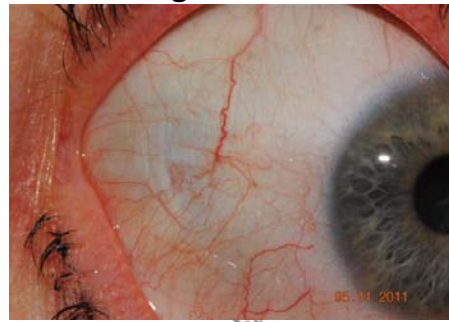
MarysHerbs.com

Thyroid Fork ~ Thyroid



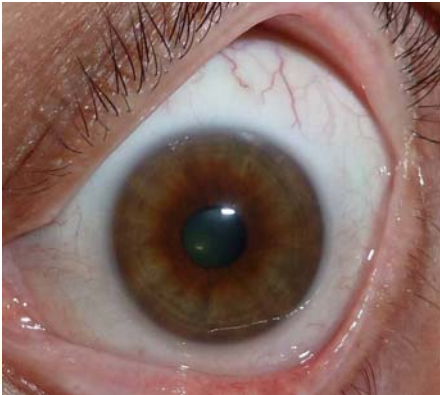
MarysHerbs.com

Pointing Toward Liver

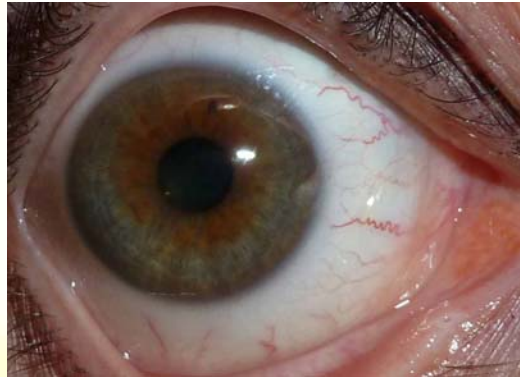


MarysHerbs.com

Pointing towards Shoulder



Pointing Towards Thyroid



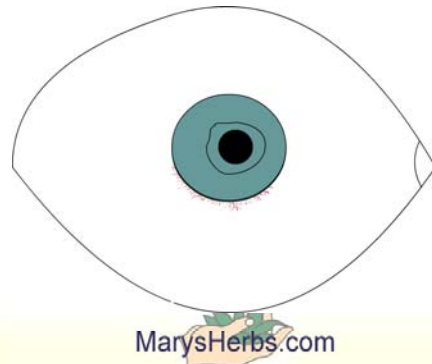
4. Lines Pointing toward Iris (of various configurations)

- a. Position
 - b. Proximity
 - c. Prominence
- Shows in either eye and positions

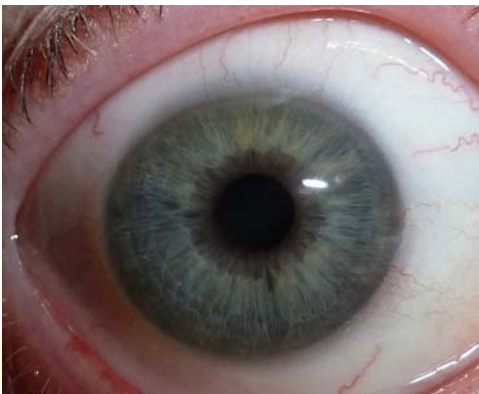
d. Shape

- Fermentation
- Infection Pocket
- Toxic Lines
- **Allergy Net**
- Abnormal Tissue
- Blood Pressure Loop
- Encapsulation
- Healing Hook
- Healing Lines
- Saw tooth

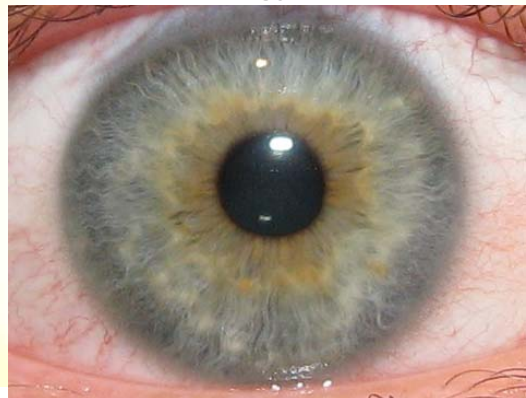
Allergy Net ~ Fine Lines Around the Iris



Allergy Net



Allergy Net



Allergy Net



4. Lines Pointing toward Iris

(of various configurations)

- a. Position
- b. Proximity
- c. Prominence

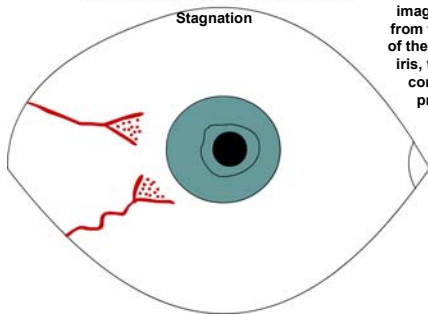
Shows in either eye and positions

d. Shape

- Fermentation
- Infection Pocket
- Toxic Lines
- Allergy Net
- **Abnormal Tissue**
- Blood Pressure Loop
- Encapsulation
- Healing Hook
- Healing Lines
- Sawtooth

MarysHerbs.com

Abnormal Tissue



Draw an imaginary line from the middle of the fork to the iris, this is the core of the problem

MarysHerbs.com



4. Lines Pointing toward Iris

(of various configurations)

- a. Position
- b. Proximity
- c. Prominence

Shows in either eye and positions

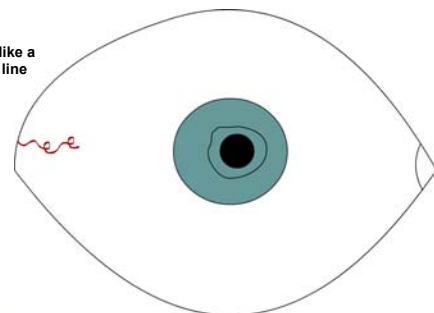
d. Shape

- Fermentation
- Infection Pocket
- Toxic Lines
- Allergy Net
- Abnormal Tissue
- **Blood Pressure Loop**
- Encapsulation
- Healing Hook
- Healing Lines
- Sawtooth

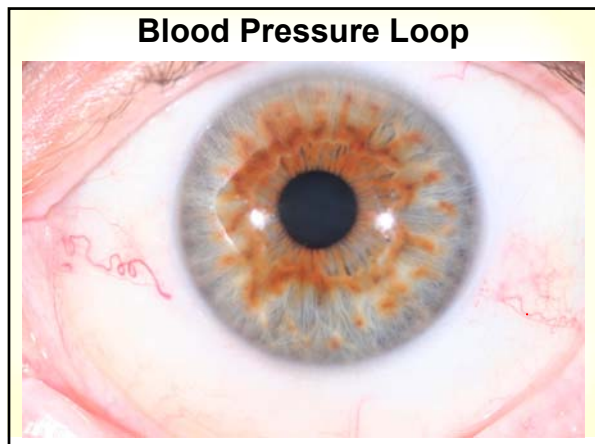
MarysHerbs.com

Blood Pressure Loop

Looks like a Toxic line



MarysHerbs.com



4. Lines Pointing toward Iris

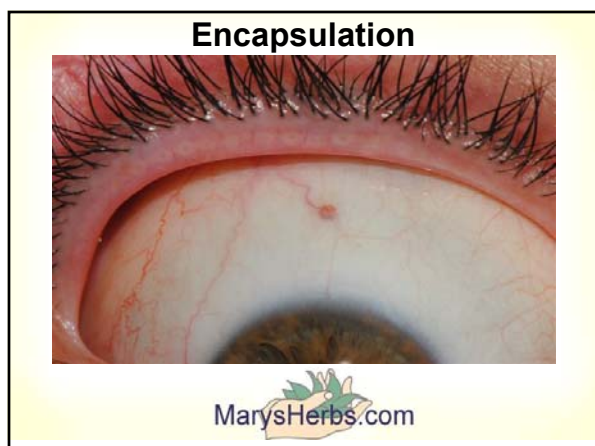
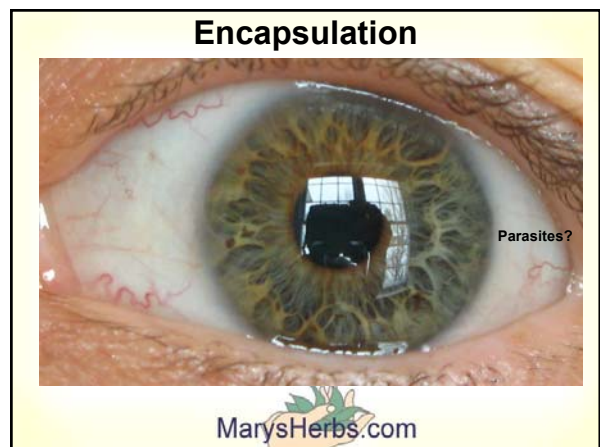
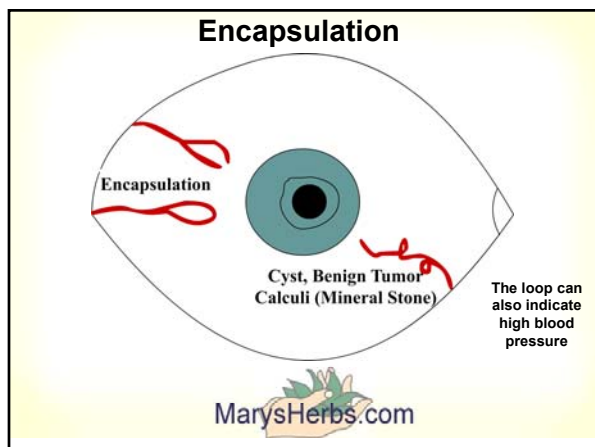
(of various configurations)

a. Position
b. Proximity
c. Prominence Shows in either eye and positions

d. Shape

• Fermentation	• Encapsulation
• Infection Pocket	• Healing Hook
• Toxic Lines	• Healing Lines
• Allergy Net	• Saw tooth
• Abnormal Tissue	
• Blood Pressure Loop	

MarysHerbs.com



4. Lines Pointing toward Iris

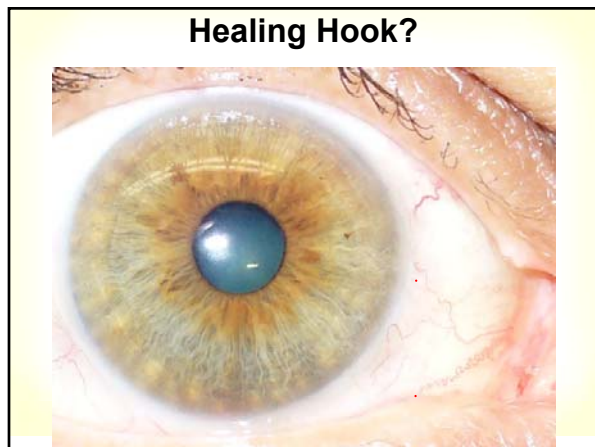
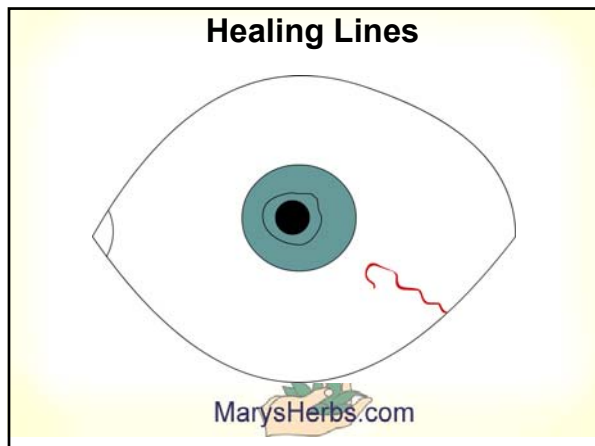
(of various configurations)

a. Position
b. Proximity
c. Prominence Shows in either eye and positions

d. Shape

• Fermentation	• Encapsulation
• Infection Pocket	• Healing Hook
• Toxic Lines	• Healing Lines
• Allergy Net	• Sawtooth
• Abnormal Tissue	
• Blood Pressure Loop	

MarysHerbs.com



4. Lines Pointing toward Iris

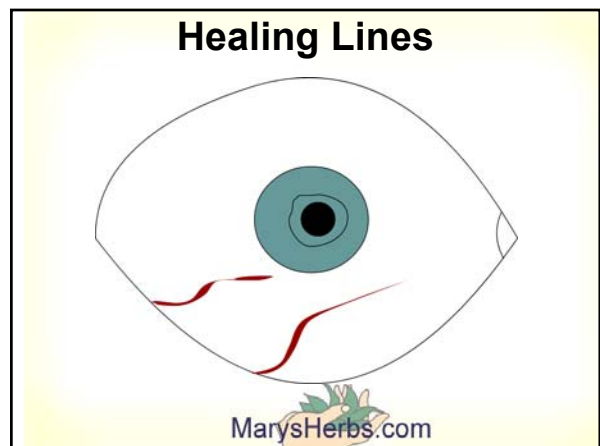
(of various configurations)

a. Position
b. Proximity
c. Prominence Shows in either eye and positions

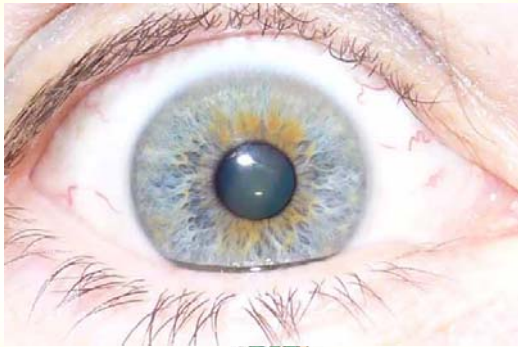
d. Shape

- Fermentation
- Infection Pocket
- Toxic Lines
- Allergy Net
- Abnormal Tissue
- Blood Pressure Loop
- Encapsulation
- Healing Hook
- **Healing Lines**
- Saw tooth

MarysHerbs.com



Healing Lines



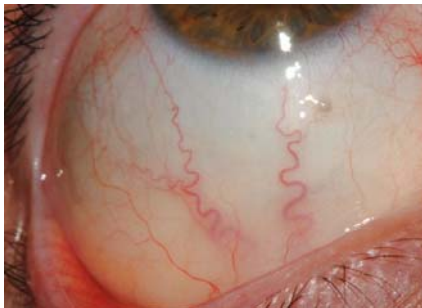
MarysHerbs.com

Healing Lines



MarysHerbs.com

Healing Lines ~ Autonomic Nervous System



MarysHerbs.com

4. Lines Pointing toward Iris (of various configurations)

- a. Position
 - b. Proximity
 - c. Prominence
- Shows in either eye and positions

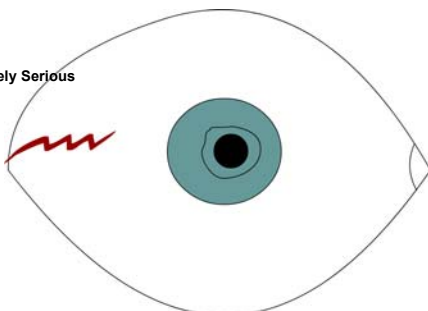
d. Shape

- Fermentation
- Infection Pocket
- Toxic Lines
- Allergy Net
- Abnormal Tissue
- Blood Pressure Loop
- Encapsulation
- Healing Hook
- Healing Lines
- **Saw tooth**

MarysHerbs.com

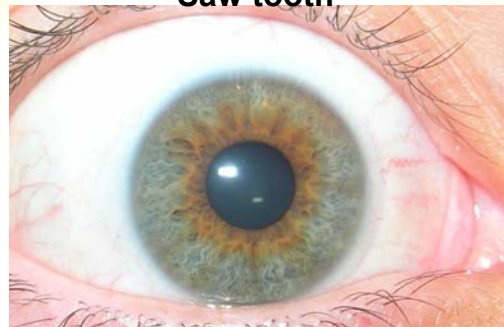
Saw tooth

Extremely Serious



MarysHerbs.com

Saw tooth

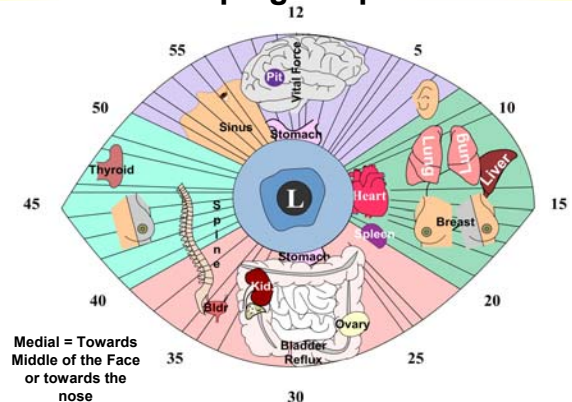


MarysHerbs.com

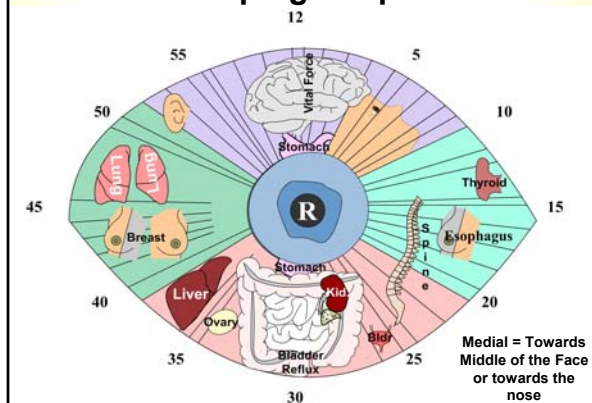
Saw Tooth to Pancreas



Keeping Simple



Keeping Simple



Victoria
208-569-9589 cell
victoria@ida.net email

<http://www.naturalhealthchicks.com> website
<https://www.facebook.com/groups/Healthchick/>
Facebook page

Questions

PERSON WHO INVITED YOU



facebook

Mary Paranch
Reed Gates
Edit Profile
GROUPS
Natural Health Profess...

Mary Reed Gates
MarysHerbs@aol.com
717-898-2220



Shari
sweisenbach@etczone.com email
<http://herbalbeginnings.weebly.com> website
(812) 593-0419 Phone
<https://www.facebook.com/Herbal-Beginnings-850250861668814/timeline/>
Facebook page

facebook

Mary Paranch
Reed Gates
Edit Profile
GROUPS
Natural Health Profess...

Mary Reed Gates
MarysHerbs@aol.com
717-898-2220



Contact:

Questions

Mary Reed Gates
MarysHerbs@aol.com
<http://www.NaturesHerbs.biz>
717-898-2220



To be put on
our emailing
list go to: <http://www.naturesherbs.biz/>

First Name
Email Address

facebook

Mary Paranch
Reed Gates
Edit Profile
GROUPS
Natural Health Profess...



<http://www.herbalremedyexpert.com/PIC-WG-PP>

facebook

Tara Belderok

816-903-3377

<http://www.mynsp.com/LetsGetHealthy123Go>



To be put on
our emailing
list go to: <http://www.naturesherbs.biz/>

Technical issues a week we have FREE online classes about natural health. If you are interested in being notified of our classes, please fill in the form below.

Are you interested in attending one of our FREE Live Online Lectures?

☐ YES

☐ NO

First Name

Email Address



<http://www.herbalremedyexpert.com/PIC-WG-PP>

Mary Reed Gates 717-898-2220

MarysHerbs@aol.com