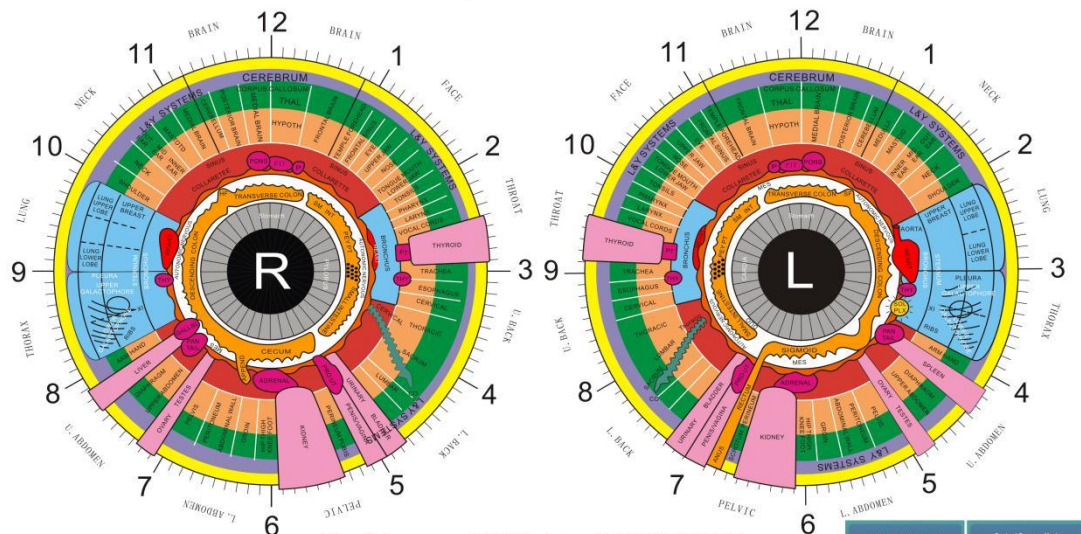


# IRIDOLOGY CHART

<https://iriscope.org> TEL/WhatsApp:008619154901065



<https://iriscope.org> TEL/WhatsApp:008619154901065

APPEND	Appendix	PEY PT	Peyers Patches
CO	Coccyx	PIT	Pituitary
DUD	Duodenum	PRO	Prostate
GALLBL	Gallbladder	SF	Splenic Flexure
HF	Hepatic Flexure	SCAP	Scapula
HYPOTH	Hypothalamus	SOL PLX	Solar Plexus
MES	Mesentery	THAL	Thalamus
P	Pineal	THY	Thyroid
PT	Parathyroid	URETH	Urethra
PAN	Pancreas	XI	Xiphisternum
L&Y	LYMPHATIC & CIRCULATORY		



## INTERNATIONAL IRIDOLOGY HEALTH ASSOCIATION

For reference only All rights reserved

<https://iriscope.org> TEL/WhatsApp:008619154901065

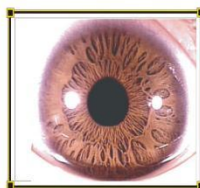
# IRIDOLOGY CHART

## Normal Iris & Abnormal Iris Comparison

A perfect iris shown without lacuna, spot, crack and birth genetic defect, which is no accumulate in color, no fiber disorder, uniform in color and smooth like a silk in surface texture. When any change in the iris, it means corresponding organ has been reflected functional disturbances or drop off.

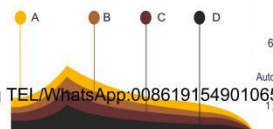


Normal Iris



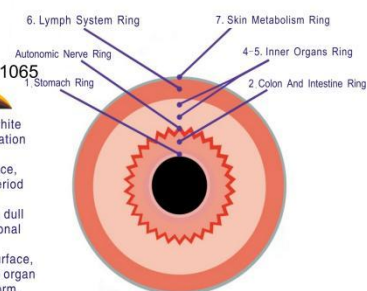
Abnormal Iris

## Iris Four Period



- A. Acute period:** Any part of the iris surface, white and golden yellow in color, shown inflammation inside the body (over the iris surface).
- B. Sub-acute period:** Any part of the iris surface, brown in color, called sub-inflammation period (below the iris surface).
- C. Chronic period:** Any part of the iris surface, dull brown. Indicates part of the organ is functional disturbances (hollow).
- D. Degeneration period:** Any part of the iris surface, deep dark. Means the major function of the organ has lost, pathological changes is easy to form, especially the tumor (deep hollow).

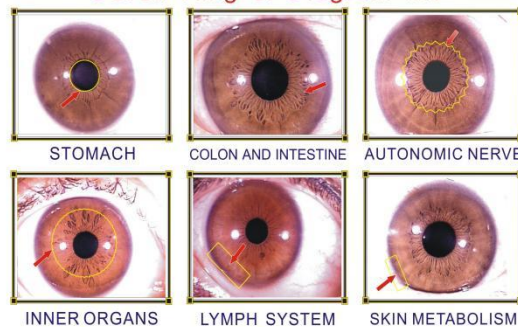
## Iris Seven Ring



## Symptoms of Iris



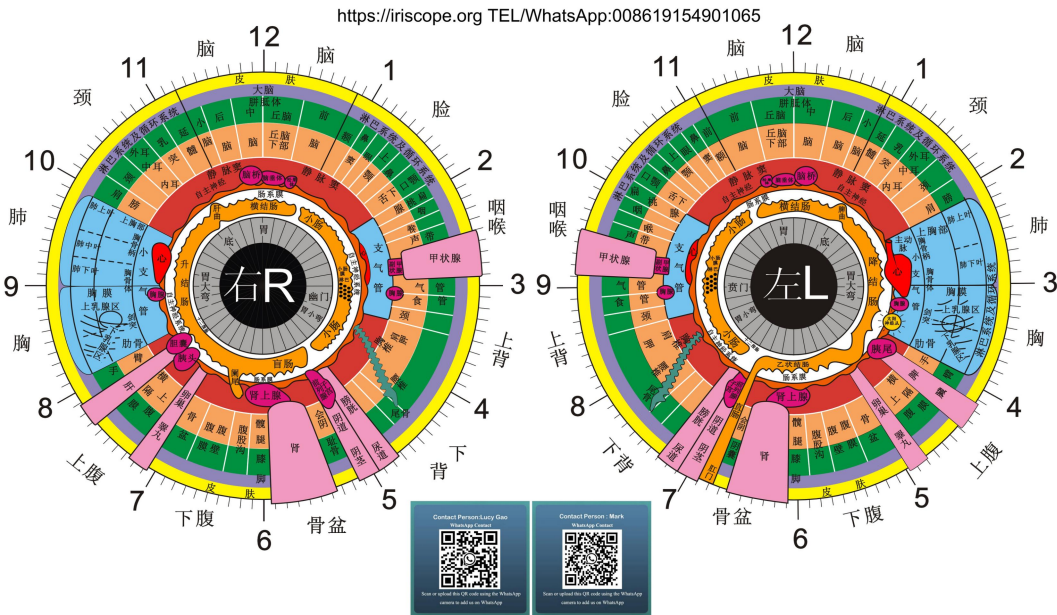
## Seven Ring of Diagram Iris



<https://iriscope.org> TEL/WhatsApp:008619154901065



# 虹膜反射图



国际虹膜健康学会  
INTERNATIONAL IRIDOLGY HEALTH ASSOCIATION

加拿大虹膜学研究学院

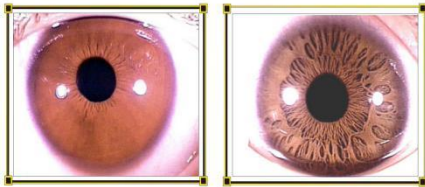
以上资料 仅供参考 版权所有 翻版必究  
<https://iriscope.org> TEL/WhatsApp:008619154901065



# 虹膜教育图

## 相对正常的虹膜与异常虹膜的对比

一个完美的虹膜显示出来是没有坑洞、斑块、裂缝、先天性遗传弱点，没有色素沉着，纤维没有扭曲，颜色均匀，如同丝绸一般光滑密集。当身体器官功能发生变化时，在虹膜相应的反射区里将呈现各种不同的征象，虹膜能记录生命的各种现象，有什么样的虹膜就有什么样的身体。



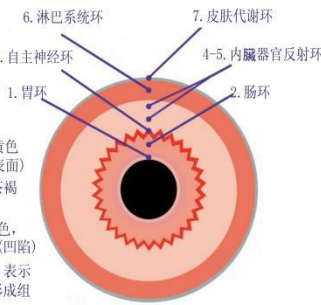
相对正常虹膜

异常虹膜

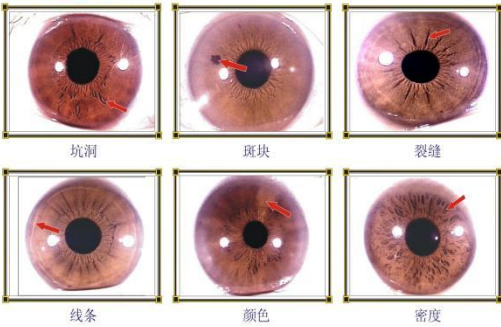
## 虹膜四期

- A. 急性期:在虹膜表面任何部位，呈现金黄色及白色，表示内部有炎性征象。(凸起表面)
- B. 亚急性期:在虹膜表面任何区域，呈现茶褐色及浅灰色，称炎性期。(表面之下)
- C. 慢性期:在虹膜表面任何区域，呈现暗褐色，表示该反射区组织器官功能减退现象。(凹陷)
- D. 退化期:在虹膜表面任何区域，呈深黑色，表示该反射区组织器官功能衰退，亦有可能形成组织退化性改变。(深凹)

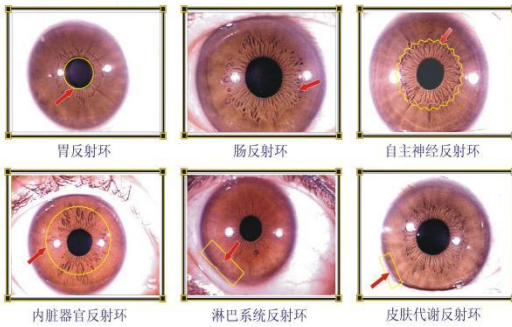
## 虹膜七环



## 虹膜征象图解



## 虹膜七环图解



<https://iriscope.org> TEL/WhatsApp:008619154901065